

S THE PLAY THAT GOES WRONG



THE MURDER AT HAVERSHAM MANOR



Springer

OPRAH HOUSE • EST. 1871

VIEW FULL
PLAYBILL



THE PLAY THAT GOES WRONG

by
Henry Lewis, Henry Shields & Jonathan Sayer

Directed by Paul R. Pierce

Scenic Designer Matthew Swindell
Lighting Designer Katie Underwood
Costume Designer Alex Allison
Properties Designer Patti Fenzel
Sound Designer Julianne Slaton
Technical Director/SFX Captain Walter Pigford
Assistant Technical Director David Jones
Director of Theatre Companies Mrs. P.J. Pidgington III
Production Stage Manager Jess Adams
Assistant Stage Manager MH Harrison
Costume First Hand Mollie Lipkowitz
Production Technician Scottie Scott
Guy Who Doesn't Know What's Happening Man Two Rows Ahead of You
Carpenters Jessica Spiece, Ty Morris
Fight Choreographer Jay Glover
House Manager David McCray
Wardrobe Melody Carter
Run Crew Miya Chambers, Maria Scott, Manuel Abreú,
Elowyn Rinaudo, Jax Billingslea, Michael Mack, Nic Taylor

THE PLAY THAT GOES WRONG is presented by special arrangement with Dramatists Play Service, Inc., New York. THE PLAY THAT GOES WRONG was first presented by Mischief Theatre under the title The Murder Before Christmas on December 4th, 2012, at the Old Red Lion Theatre in London. THE PLAY THAT GOES WRONG by Henry Lewis, Jonathan Sayer & Henry Shields © 2012, 2014 Mischief Worldwide Ltd. All rights reserved. THE PLAY THAT GOES WRONG, the "Falling G" logo device, Mischief, and Mischief Theatre are trademarks of Mischief Worldwide Ltd. All rights reserved.

THANK YOU TO OUR SPONSORS

NATIONAL
ENDOWMENT **for the ARTS**
arts.gov

Aflac



WC | **BRADLEY**
COMPANY

SYNOVUS




Visit **ColumbusGA**

Georgia
COUNCIL
for the **Arts**

Chris Bean
as
Inspector Carter



Topher
Payne

Jonathan Harris
as
Charles Haversham



Tate
LeClair

Robert Grove
as
Thomas Colleymore



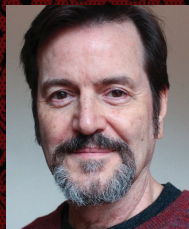
Adam
Archer

Sandra Wilkinson
as
Florence Colleymore



Aleigha
Burt

Dennis Tyde
as
Perkins



Ned
Bridges

Robert Grove
as
Cecil Haversham/
Arther the Gardner



Jay
Glover

Linda Ginge
as
Female Swing



Courtlyn
Holt

Orin Wallace
as
Male Swing



Christian
Becerra

Trevor Watson
Lighting & Sound Operator



Andy
Harvey

Annie Twilloil
Stage Manager



Ari
McLean

Preorder with
the Saloon for
Intermission!



THE MURDER AT HAVERHSAM MANOR

THE CORNLEY UNIVERSITY DRAMA SOCIETY PRESENTS

RESERVE YOUR TICKETS TODAY

www.springeroperahouse.org/buy-tickets

March 17 - April 2



April 20 - 30



May 5 - 21



VISIT US IN THE SALOON & GIFT SHOP!

CLICK HERE

TO **PRE ORDER**
YOUR INTERMISSION
SNACKS AND DRINKS

Please note that there is **no food allowed** in the theatre. Drinks may be brought in only in an official Springer Cup, available for purchase in the Saloon.

In tune with your potential.

Synovus is proud to support the
Springer Opera House.



Start your journey
at **synovus.com**.

SYNOVUS[®]
get there

Synovus Bank, Member FDIC

CAST BIOS



Adam Archer (Robert as Thomas Collymoore) is thrilled to be back home, performing for the wonderful audiences of the Springer Opera House. Adam has enjoyed a 15 year relationship with the Springer. While at this historic theater he has worked as an actor, director, teacher, No Shame Theater

director, and Administrator. After the Springer, Adam moved to Chicago to study improvisation. During his time in Chicago he studied improv at legendary theaters like iO Chicago, The Annoyance Theater, and eventually became a member of The Second City MainStage. He currently resides in Los Angeles. You may have seen him recently as a man becoming his parents in the hilarious Dr. Rick Progressive commercials. Go see No Shame Theater every Friday at 10:30 PM here at The Springer Opera House.



Christian Becerra (Male Swing) is excited to be back for his seventh production at the Springer. He is an Army Veteran and currently working as a local actor. You may have also seen him in *White Christmas* (Bob Wallace), *The Wizard of Oz* (Tinman), and *Little Shop of Horrors* (Orin). Some of his other

favorite roles include Mitch in *The 25th Annual Putnam County Spelling Bee*, Aaron in *First Date*, and Henry in *Next To Normal*. Christian would like to personally thank his closest family members and girlfriend for their constant love and support!



Aleigha Burt (Sandra as Florence Colleymoore) is an Atlanta based actress. She graduated from Columbus State University with a Bachelor's of Fine Arts degree in Theatre Performance in the Spring of 2021. During her freshman year of her collegiate training, she was in *Jackie and Me* here at the

Springer, as well as the production of *Steel Magnolias* in the Spring of 2022! She is so excited to be back for her third production! Aleigha would like to thank God for another opportunity to do what she loves and her parents and family for their endless support!



Ned Bridges (Dennis as Perkins) was a SAG/Equity member in his younger days, with New York stage credits that include understudying and replacing Matthew Broderick in the world premiere of *The Widow Claire* at Circle in the Square and performing the title role

in *Burrhead* at The Directors Company. In regional theatre he was Oswald in Ibsen's *Ghosts*, Billy Bibbit in *Cuckoo's Nest*, Nicely in *Guys and Dolls*, and Caliban in *The Tempest*. His film and television credits include co-starring with Lee Remick in "Rearview Mirror" and playing a featured role in Kenny Rogers' "Coward of the County." These days, Ned performs with the band Shades of Gray and lives in Atlanta with his beautiful wife Lisa. Their son Julian, a musician and filmmaker, and daughter Bernadette, a writer and filmmaker, live in Los Angeles. Ned's previous Springer appearances include performances in *Mother of Rain and Kudzu: the Musical*, and he had the great fun of playing King Arthur in *Spamalot*. He is thrilled to be back at the Springer and thanks Paul Pierce and the entire cast, crew, and administration for this happy opportunity.



Jay Glover (Max as Cecil Haversham/Arthur the Gardner) is excited to be returning to the Springer as Max. He is a Phenix City native and Springer Theatre alum who earned his BFA in Musical Theatre at the University of South Alabama.

This is his fifteenth show with the Springer and you might have seen him in *Evil Dead: the Musical*, Ed; *Cinderella*, Jean-Michel; *The Little Mermaid*, Pilot; *The Great Gatsby*, Chester McKee; *West Side Story*. He has also toured with the Hampstead Stage Company for two seasons and Springer Theatricals, *Route 66*, and just recently *The Play That Goes Wrong* as Jonathan (Rochester Opera House). He would like to thank his family and friends for their love and support.

CAST BIOS



Andy Harvey (Trevor) hails from Beckley, WV. He attended Liberty University where he studied Theatre, History, and Psychology. His performing career has led him to be seen by millions of people in over 25 states. His favorite characters on stage have been the Lion in *Wizard of Oz* (Crane River

Theatre) Frolo in *The Hunchback of Notre Dame* (Alluvion Stage Company), Scrooge in *A Christmas Carol* (Various productions and National Tours), and Jean Valjean in *Les Miserables* (Springer Opera House). Andy is also a Voice Actor who's characters and narrations have been heard all over the world. When not on stage or behind the microphone Andy enjoys sports (Let's GO Mountaineers!), painting, gardening, laughing, LEGOS, cooking, hanging out with his 10 nieces and nephews, and the more than occasional series binge. Andy is thrilled to be back at his home away from home at The Springer! God Bless! www.TheAndyHarvey.com



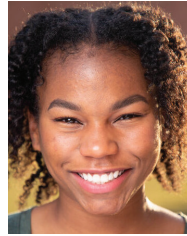
Courtlyn Holt (Female Swing) is so far her 10th show at the Springer Opera House! You may have seen her in the Singer's productions of *Shrek*(Gingy), both productions of *Evil Dead* (Linda), *Winter Wonderettes* (Cindy Lou), *The Best Little Whorehouse in Texas* (Eloise), *Cinderella* (Ensemble), *The Bodyguard* (Ensemble), *Little Shop*

of Horrors (Audrey), and *White Christmas* (Rhoda). She also recently was a proud Musical Theatre teacher for the Springer Theatre Academy's 2022 summer. Some of her other favorite credits include *Legally Blonde* (Elle Woods), *Pippin* (Fastrada), *Cabaret* (Fritzie), *Cendrillon* (Cendrillon), *Speed Dating, Tonight!* (Dater #4 and #50), and *Guys & Dolls* (Hot Box Girl/ U.S. Sara Brown). She is looking forward to her upcoming shows at Springer as well in *Little Shop of Horrors* (Audrey) and *Guys & Dolls* (ensemble). Courtlyn would like to thank her family, boyfriend, friends, and mentors for supporting and loving her along the way.



Tate LeClair (Jonathan as Charles Haversham) serves as the Springer's Director of Development and oversees all fundraising initiatives at the theatre. When he isn't writing grants, he enjoys being on stage or in rehearsals. Recent Springer credits include: *Shrek the Musical* (Director), *Evil Dead* (Jake), *The*

Best Little Whorehouse in Texas (Ensemble, Assistant Director), and *Sister Act* (Joey, Assistant Director). He has a Bachelor of Fine Arts in Theatre Performance from Columbus State University where he was on the Dean's List and a member of the National Honors Fraternity, Alpha Psi Omega.



Ari McLean (Annie) is excited to back for her 5th production at the Springer Opera House. She is a recent graduate from Columbus State University with a degree in Business Management. You may have also seen her in *Shrek* (Young Shrek, Baby Bear) and *The Color Purple* (Nettie). Ari would like to thank her parents, sister, and close friends for always supporting her.



Topher Payne (Chris/Inspector Carter) has previously worked with The Springer team as an actor (*A Tuna Christmas, Frost/ Nixon*), director (*Cat On a Hot Tin Roof, Perfect Arrangement*), and playwright (*Lakebottom Proper, Lakebottom Prime*.) Topher is a screenwriter and playwright based in Atlanta. He

is a member of The Writer's Guild of America and The Dramatist's Guild, and was the 2018 inductee into the Georgia Theatre Hall of Fame.



Cher (All Roles, rotating) Cher is a singer and actress whose successful career has spanned more than 50 years. She is among the few people that have won an Emmy, Grammy, and Academy Award. In 1982, Cher made her Broadway debut in the play *Come Back to the 5 & Dime, Jimmy Dean, Jimmy Dean* and starred in its film adaptation. She subsequently garnered critical acclaim for her performances in films such as *Silkwood* (1983), *Mask* (1985), *The Witches of Eastwick* (1987), and *Moonstruck* (1987), the last of which won her the Academy Award for Best Actress. Her worldwide record sales have exceeded 100 million, and she has reached #1 on at least one Billboard chart every decade from the 1960s through the 2010s. She is humbled to be making her Springer Opera House debut.

DIRECTOR'S NOTES

I confess that I underestimated the characters in *THE PLAY THAT GOES WRONG* when I first went into rehearsal. Perhaps you can find it in your hearts to forgive me for that.

It would be easy to dismiss these folks as inept theatrical dilettantes; incompetent amateurs desperate to be taken seriously. Pretenders. But in the past three weeks, I've learned something essential from them that I once knew but had forgotten.

Having spent a goodly portion of my early years as a director working with amateurs, I found them to be among the purest lovers of our art. In fact, the word "amateur" derives from the Latin word, "amo" - love. The people who leave their day jobs at five o'clock, grab something to eat and head for rehearsal are not doing theatre for money. They are doing it for love.

The celebrated Norwegian actress Liv Ullman was puzzled by America's disdain for amateur actors when she arrived on our shores. In the Norway of her youth, an amateur actor was admired because they were unsullied by financial motives that served to corrupt an artist. Love of the art form was the highest ideal in Norway.

Murder at Haversham Manor is performed by such actors. They have no formal training but they have picked up a few tips to guide them. "The show must go on" is one basic shibboleth. "If something goes wrong, improvise!" is another. With these twin doctrines in hand, the actors of the Cornley Drama Society forge intrepidly forward.

In a couple of months, we will hit the three-year mark of the Covid-19 disruption which has wreaked havoc on the performing arts industry world-wide. While audiences are slowly returning to their favorite theatre haunts, some portion of theatre-lovers are still cautious and staying home. In fact, the Springer's audience has not yet returned to pre-Covid attendance numbers, but we are doing far better than most American theatres - some of which have tragically shut their doors for good. That's not going to happen here.

While I underestimated the Cornley Drama Society actors at first, I have grown to admire them above all others. They are passionately devoted to the love of the art and through all manner of calamity, they persist and make it to the end. After 46 years in this industry, I am more convinced than ever that theatre is a noble enterprise. Those of us who earnestly believe that, have to wake up every morning and fight for its survival. That includes you.

Here's to the Cornley Drama Society and here's to Love.

Paul R. Pierce

Director, *The Play That Goes Wrong*

PRODUCTION BIOS

Paul R. Pierce (Director) has led the Springer Opera House as producing artistic director since 1988, taking the State Theatre of Georgia in new artistic directions while expanding its audience and influence throughout the nation. For over 30 years, Paul has directed and produced more than 300 comedies, dramas and musicals at the Springer. A Rome, Ga. native with a Bachelor of Fine Arts degree from the University of Georgia, he is also an Equity actor who has performed in over 1,000 American and Canadian cities with stock, regional, touring and children's theatre companies. Paul is the author of nine plays and *The Springer Ghost Book*.

Matthew Swindell (Director of Production) is the Springer's Director of Production. He graduated from Columbus State University with a Bachelor of Fine Arts in Theatre Design and Technology. He has worked on many Springer productions over the past ten years in a variety of different roles including Director, Scenic Designer, Lighting Designer, Technical Director, and Road Manager for the Springer's touring company, Springer Theatricals. You may also remember Matthew from his time on stage as Teddy Roosevelt in the Springer's 2017 production of *Newsies*.

Julianne Slaton (Sound Designer) is a graduate of CSU where she earned a BFA in Theatre Design and Technology with a focus on Sound Design and Audio Engineering. She started at the Springer as a volunteer and transitioned to working here full time for the 2015 production of *A Chorus Line*. She has since enjoyed working as the Resident Sound Designer and Audio Engineer for almost every Springer production thus far, and looks forward to all of the future productions to come.

Patti Jo Fenzel (Props Designer) earned her Bachelor of Fine Arts in Theater Design and Technology from CSU in 2010 and has worked in theaters around the country including Florida Repertory Theater, Texas Shakespeare Festival and Opera New Jersey.

Jess Adams (Production Stage Manager) earned a Bachelor of Arts in Theatre from Columbus State University in 2016. They are the former Production Manager / Production Stage Manager of Majestic Repertory Theatre, an immersive theatre in Las Vegas, NV. Jess leads the Springer's stage management team and serves as the primary stage manager for the Main Stage Series. Previous credits include *The Bodyguard*, *Mother of Rain*, *ACE: The Eugene Bullard Story*, *Million Dollar Quartet*, *Kudzu: The Musical*, *Jackie & Me*, *Last of the Red Hot Lovers* (Springer Opera House); *The Manson Family: an opera*, *Sweeney Todd* (Majestic Repertory Theatre). jessadamssm.com

Alex Allison (Costume Designer) has been working as a costume and wig designer across the US and also worked with Norwegian Cruise Lines as a Production Wardrobe Supervisor. He worked on shows like *Jersey Boys*, *Swing the Musical* and an original production of Warren Carlyle's *Havana!* Alex grew up in Lincoln, NE and began performing at local community theatres at a young age. His favorite costume and wig design credits include *Grease* and *Stardust Road* at Temple Theatre in Sanford, NC; *Hairspray* at Pinewood Bowl Inc. in Lincoln NE; *Guys and Dolls* at The Stage Theater in Hickman, NE; Wigs for *Bonnie and Clyde* at The Stage Theater in Hickman, NE; *The Drowsy Chaperone* at The Monomoy Theatre in Chatham, MA; and *The Fantasticks* at The Monomoy Theatre in Chatham, MA.

THEATRE COURTESIES

Katie Underwood (Lighting Designer) is a senior member of the Springer artistic staff responsible for casting and contracting production personnel for all mainstage and studio productions. She is also one of several directors on our staff with past credits including *The Wizard of Oz* and *The Great Gatsby*. Katie serves as the primary lighting designer for productions taking place in our McClure Theatre with favorite designs including *Ace: The Eugene Bullard Story*, *The Jungle Book*, and *Mother of Rain*. She is a Springer Theatre Academy alumni and a graduate of the CSU with a BFA in theatre design and technology. Katie recently completed her MBA from Kennesaw State University. She is an avid runner and fitness enthusiast. When not in rehearsal or doing school work, Katie enjoys spending time with her husband and two girls. If she's not at work or at home, she's probably at the gym.

Walter Pigford (Technical Director) is from Georgia, graduating from Georgia Southern University Armstrong Campus (previously known as Armstrong State University) with a BA in theater. After graduating he lived in NYC for 4 years working on the Off-Broadway circuit and working full time as the Assistant Technical Director at Pace University. He has worked at various regional theaters around the country but is glad to be back in his home state bringing theater to the Columbus community.

MH Harrison (Asst. Stage Manager) is a 2019 Graduate of Columbus State University, where they earned a Bachelor of Fine Arts in Theater Design and Technology and a Minor in Studio Art. MH currently works at the Springer as a Stage Manager, Deck chief, and resident MH.

ELECTRONIC DEVICES

No doubt we have all been distracted by a cell phone or watch alarm ringing or lighting up when attending the theatre. Out of consideration for your fellow audience members, we ask that you turn off all electronic devices that emit noise or light. Thank you.

ALLERGY ALERT

For the safety of those with allergies, please refrain from the use of scented perfumes, colognes, or lotions before coming to the theatre.

LATE SEATING

We endeavour to minimize the distraction for our patrons and actors when seating latecomers. If you arrive late for a performance, you will be seated at the first appropriate moment in the show in designated latecomer seating. You are welcome to move to your assigned seat at intermission.

EMERGENCY EXITS

We ask that you please take a moment to identify the exit nearest you, so you can safely exit in the event of an emergency.

TALKING

Please refrain from talking to your neighbor during the performance, as it can be distracting to other audience members as well as the performers on stage.



SPRINGER THEATRE ACADEMY



www.springeroperahouse.org

SPRINGER THEATRE
ACADEMY

SPRING BREAK ACADEMY

SESSIONS AVAILABLE
FOR K - 12TH GRADES

APRIL 3-7, 2023
K-2ND 9AM-3PM
3RD-12TH 9AM-5PM



Summer

2023



springeroperahouse.org/education



The Springer Society is the driving force behind vital programs which could not exist without donor support. Ticket sales only make up a portion of the costs of preserving and protecting this beautiful National Historic Landmark building and providing educational and artistic programs. If you are a Springer Society member, Thank You! If not, we invite you to join. For more information about

Springer Society, email Development Director
Tate LeClair at tleclair@springeroperahouse.org

[**CLICK HERE TO DONATE**](#)

PRODUCER \$30,000

Beloco Foundation
Georgia Council for the Arts
In Memory of Dr. Mary W. Schley
J. W. & Ethel I. Woodruff Foundation
Tom & Lucile Flournoy
McClure Family Foundation

INVESTOR \$15,000

Aflac, Inc.
CSG Columbus Airport
In Memory of Dr. Franklin J. Star
Jack & JoRhee Pezold
Mr. & Mrs. Frank B. Schley, III
Synovus Bank & Trust
The Steeplechase at Callaway Gardens
VisitColumbusGA
W. Michael & Elizabeth C. Ogie
W.C. Bradley Companies

CHAMPION \$6,000

Dr. Alice Budge & John Greenman
Dr. David H. Levine
Cherry Pease
Egan Foster
Mrs. Elizabeth T. Corn
Hardaway Foundation
Mr. & Mrs. William B. Turner, Jr.
Mrs. Clifford J. Swift, III
Ms. Katherine C. Wilson
Sallie T. & John C. Martin, II
Steve & Kent Butler
Joe & Gail McClure
Walter Alan Richards Foundation

CHALLENGER \$3,000

Four G's Charitable Trust
Jacquie Rawls
Janet G. & Colston Kemp
Jim & Melissa Thomas
John Hargrove

Katherine Woodruff Williams
Mr. & Mrs. Ray Brinegar, III
Mr. and Mrs. Anthony D. Link
Warner Neal, Jr.
Dr. & Mrs. Richard Robbins

GUARDIAN \$1,500

5Q Partners
Betty L. Auten
Brian Luedtke
Carla Stickle
Cindy & Spencer Garrard
Creek Stand Partners, L.P.
David E. & Lori B. White
Dr. & Mrs. Jerry Goldsmith
Francis Springer
Frank & Pamela Feagle
James G. & Kathryn A. Hillenbrand
Kelsey & Barbara Kennon
Kevin & Susan White

Linda Reusmann
Lisa Bradfield Powers
Marcia English
Mr. & Mrs. Jack J. Pease, III
Mrs. Elizabeth T. Corn
Mrs. Janice P. Biggers
Newt & Phyllis Aaron
The Jackson-Burgin Foundation, Inc.
Susan Stephenson
Sallie T. & John C. Martin, II
Suzanne & Ed Burdeshaw
Dr. Karen Stone

PATRON \$900

Bobbi Farber & Thomas Walsh
Chris and Wendy Miller
Columbus Bar Association
Doug & Jan Crawford
Dr. & Mrs. Cecil Whitaker, Jr
Sheila & Tommy Davis
Janet Davis
Jerry B. & Marjorie Newman
Jimmy & Barbara Motos
Joel & Suzanne Fine
John & Sam Newton
Karen & Chris Stephenson
Marnie Salter
Mr. & Mrs. J. Madden Hatcher, III
Mr. & Mrs. James P. Trotter, Jr.

Mr. & Mrs. John W. Walden, Jr.
Mr. Neal Fenter
Rocky & Sabine Kmiecik
Ron & Nancy Adam
Sandra Langford
The B24 Fund
The Thornton Jordan Family Foundation
Wendy and Steven Daknis
Willcox-Lumpkin Foundation, Inc.
Orin Lincoln
Rennie & Cathy Bickerstaff
Wade & Adrienne Wallace
Christy Brumfield
Jeff & Linda Howard
Murray & Celia Solomon

BENEFACTOR \$600

Bernard & Sylvia Witt Foundation
David & Marguerite Hay
Dr. Bruce Boretsky
Dr. Christine Daniels Touris
Gil and Shari Maulsby
Knight-Rawls Inc
Martha Tubb
Michael & Yanci See
Mr. & Mrs. William C. Starr
Mr. & Mrs. Wright B. Waddell

Mr. and Mrs. Joel O. Wooten
Mrs. Kathy J. Riley
Mrs. Richard R. Hallock
Ray & Lee Vinson
Rob and Elizabeth Harbison
Suzanne & Ed Burdeshaw
John & Louise Laney
Charlotte Alex Saunders
David & Marguerite Hay
Shirley Shavers

STAR \$300

Annie Kirkland
Bernice & Mansfield Bias
Betty Townsend
Bill & Ann Crowder
Bill & Dixie Turman
Bill & Stephanie Privette
Bill Headley
Bob & Brenda Ammerman
Bob Patterson
Bobbie & Don Dakin
Charles E. Hall, Sr. & Sally Hall
Claude & Molly Scarbrough
Columbus Fire & Safety Equipment Co., Inc.
Dan & Carol Trimble
Dan & Sandy Dawson
Debbie & Dick Tompson
Deborah Bordelon & Thomas Lenham
Doug & Jan Crawford
Dr. and Mrs. Philip Brewer
Dr. Christine Daniels Touris
Dr. Christine Senn & Dr. Jeff Kingsley
Dr. Daniel & Mrs. Bridget Alcide
Dr. Robert & Jane Marcus
Dusty & Sam Wellborn
Ed & Lana Helton
Edith Satterwhite
Ethelyn W. Riley
Gary & Betsy Langbo
Henry S. Farmer
Iveta & Jim Boyanchek
Jeffrey & Kimberly Adams
Jim & Ann Campbell

Joanne Cavis
John & Louise Laney
Julia & Ronnie Culpepper
Kayron & John Laska
Larry & Patty Cardin
Lee Woodbury
Mansfield Bias
Margaret B. Smith
Maria Luisa Aranas
Mike & Ruth Nichols
Milton & Kathleen Jones
Mr. & Mrs. J. Rick Alexander
Mr. & Mrs. Jack J. Pease, III
Mr. & Mrs. John Ceccato, Jr.
Mr. & Mrs. Seth L. Knight III
Mr. and Mrs. Joel O. Wooten
Mr. Neal Fenter
Optimist Club of Columbus
Pam & Charlie Johnson
Pat & Jack Wilensky
Peter & Robin Logue
R. Clark Gillett, Jr.
Robert Saint-Amand
Robin Logue
Sheila & Tommy Davis
Shirley B. Moon
Taylor and Grace Burton-Edwards
Terry & Jim Irvin
Virginia Burdo
Wendy and Steven Daknis
William Bray
William Fort Morgan

PARTNER \$150

Agnes A. Shelton
Alan Rothschild
Amy Higgins
Anne Mims
Anthony & Rhonda Guerrero
Bill & Elizabeth Bowling
Billy Cunningham
Billy Kendall
Bob & Lisa Bunting
Bonnie & Leslie Cohn
Booth and Frances Malone
Bridget Berryman
Brigitta Meyer-Green
Cameron McCarty
Carolyn Bermudez
Charles E. Hall, Sr. & Sally Hall
Cindy & Randy Autry
Cindy Canterbury
Cornelia S. Partain
Corrin Riley

Dale & Jan Ellis
Dave & Jane Wilson
David & Linda Turner
Deborah Kidder
Don Chancy
Donna & Kevin Kelly
Donna M. Smith
Dr. & Mrs. James A. Lawrence
Dr. and Mrs. Richard Nurnberg
Dr. Barbara Minsky
Dr. David & Karen Lewis
Dr. John R. & Mrs. Claudia C. Stephenson
Dr. Thomas A. & Sherry F. Wade
Eva & John Chappelle
Fay Coleman
Faye & Joseph Waller
Frank B. Orr
Gary & Teresa Abell
Geary & Murvina Underwood
George & Debbie Lipscomb

George E. & Carol Casion
Guy & Marianne Smith
Gwyn Newsom
Happy Travelers, INC.
Harry & Dottie Lange
Henry Farmer
Holly Stiegel
James & Allena Sperry
James R. & Frances W. Parker
Jason & Kimberly Kreisler
Jean & Gerald Kent
Jean Mann
Jean Sibold
Jeanette Marshall
Jim & Ann White
Jim & Carol Lynn
Jim & Mary Matthews
John & Lucy Sheftall
Judy and Ronald King
Karen Lord
Katherine Morgan Barbay
Katie Deal
Kelly & Martha Dimon
Kenneth M. Hamill
Kevin & Lisa Parker
Larry & Patty Cardin
Laura & Dirk Chandler
Len & Eric Kilgore
Louise & Judson W. Patten
Maj. Gen. & Mrs. Kenneth C. Leuer
Maria L. Taylor
Mark & Donna Post
Mary Ann Marshall
Mary Grace and Vernon Carroll
Melanie Smizawski
Michael & Amy Karabasz
Mick & Judy Walsh
Mickey Kiker
Mike & Patty Kelley
Milton & Kathleen Jones

Mr. & Mrs. John D. Johnston, Jr.
Mr. & Mrs. Richard L. Olson
Mr. & Mrs. Seth Harp
Mr. and Mrs. R. Chris Peebles
Mr. and Mrs. Scott M. Bryan
Mr. Cameron P. Bean
Mrs. John H. Deaton
Myra A. Durrance
Neil & Joanne Rice
Neil Block & Regina Satlof
Patty Kimbrough Taylor
Paul & Sandra Young
Peggy Gindville
Peter & Robin Logue
Pure Good Foundation
Rabbi Beth Schwartz
Randy & Jessica Kitchens
Ray & Dana Gonzalez
Richard Tucker
Rob and Elizabeth Harbison
Robbin and Charles Brasfield
Robert & Dell Felton
Robert G. Brown
Ron & Rhonda Jackson
Ronnie Culbreth
Sandra Pollock Larkin
Scott & Tisha Freeman
Sherida Brannan
Shirley & Tom Craddock
Steven & Robbin Henslee
Susan Wiley
Sylvia Black
Taylor and Grace Burton-Edwards
Terry & Jim Irvin
The Hollis Foundation
Thomas A. & Sherry F. Wade
Tom & Wynema Gates
Vernon & Mary Grace Carroll
Vivian Haulton
Walter Allen McPherson

Founders Circle

Devoted donors who have included the Springer in their wills and estate plans. To learn how you can create a meaningful legacy that will support the Springer's mission forever, please contact Tate LeClair, Director of Development, at tleclair@springeroperahouse.org.

Jack & JoRhee Pezold
Mrs. Dorothy "Dot" McClure
Otis B. & Eleanor T. Burnham
Mr. Barnett Woodruff
Mrs. Helena Pease
Mrs. Ethel "Sally" Foley
Mr. & Mrs. Thomas B. Buck
Mr. & Mrs. Richard Y. Bradley
Mr. & Mrs. Thomas H. Flournoy
Kelsey & Barbara Kennon

Mr. & Mrs. Frank B. Schley, III
Dr. & David Levine
Paul R. Pierce
Burton N. & Rita A. R. Lowe
Dr. Mary W. Schley
Janice P. Biggers
Dr. Christine Senn
Mr. Cameron Pratt Bean
Debra Melvin Faulk

HONORARIUMS AND MEMORIALS

In Memory of Col (Ret) Robert S. Poydasheff Sr.

Kim & David Antekeier
 Janice P. Biggers
 Mr. and Mrs. Richard Bradley
 Helen J. Burgin
 Chattahoochee Family Law Bar
 Ben & Kathryn Cheek
 Joyce Chittenden
 Fountain, Arrington, Bass, Mercier & Lee P.C.
 Mrs. John H. Deaton
 Sally and Madden Hatcher, Jr.
 LTC (Ret) & Mrs. Phillip J. Linn
 Mr. & Mrs. William Middleton
 Mrs. Raymond E. Mobley
 Gary & Carla Stickles
 Mr. & Mrs. William B. Turner Jr.
 Eleanor Y. Wheeler

In Honor of Sally Turner

Cameron P. Bean

In Honor of F. Clason Kyle

Mr. and Mrs. Richard Bradley

In Honor of Janice P. Biggers

Mr. and Mrs. Richard Bradley

In Honor of Tom & Lucile Flournoy

John & Bitsy Dedwylder

In Honor of Sandy Dawson

Mr. & Mrs. Norman Easterbrook

In Honor of Debbie Anderson

Ronnet & Lydia Rice

In Honor of Brian Luedtke

Neil & Joanne Rice

In Memory of Mr. Lee R. Redmond Jr.

Wynne Prather Stevenson
 Janice P. Biggers

In Memory of Sis Hargrove

Mr. & Mrs. William B. Turner, Jr.

In Honor of Mr. Frank B. Schley, III

Pam & Frank Feagle

In Memory of Dr. Mary W. Schley

Mrs. Janice P. Biggers
 Mr. & Mrs. Richard Y. Bradley
 Alice Budge & John Greenman
 Rebecca Duggan
 Pam & Frank Feagle
 Stacy & Danielle Varner

In Memory of SGM Gary Stickles

Daniel Cantu
 Marnie Salter
 Betty Townsend
 Sandra Langford
 Chandra Lothian
 Sarah Bullard

In Memory of Virginia E. Nelson

Sandra Langford

Mr. Cameron P. Bean Honors

Zada & Bill Feighner
 Tom & Lucile Flournoy
 Meg & Frank Schley
 Dusty & Sam Wellborn

A WISE INVESTMENT FUND



Thank you to all of our cash donations without recognition!

Character Builder

Remembering
RON ANDERSON

January 28, 1952 - August 24, 2016



As an actor, Ron Anderson breathed life into the roles he portrayed. As an instructor, he taught his students how to disappear into a character. But it was in the role of mentor that Ron truly changed lives; helping actors not only become various characters, but also teaching them how to build character within themselves. The Pezold Foundation is proud to recognize the immeasurable contributions Ron made to our community and to celebrate the arts he dedicated his life cultivating.


PEZOLD & FAMILY
FOUNDATION



BOARD OF DIRECTORS

Chair Dr. David Levine
Past Chair Mrs. Sally L. Turner
Chair Elect Mrs. Lisa B. Powers
Secretary Mr. Pete Temesgen
Treasurer..... Mrs. Teresa Abell

Mrs. Bridget Alcide
Mrs. James J.W. Biggers Jr.
Mr. William Bray
Mr. Ronnie Bridges
Ms. Marie A. Brooks
Dr. Alice Budge
Mrs. Lauren Chambers
Mr. Neil Clark
Ms. Sherricka Day
Mrs. Cindy Garrard
Mr. John Hargrove
Mrs. Barbara Kennon
Mrs. Len Kilgore
Mr. F. Clason Kyle

Mr. Brian Luedtke
Mr. Jim Lynn
Mr. William Fort Morgan
Mr. Joe McClure
Mrs. Eliza Morrill
Mrs. JoRhee Pezold
Mr. Lee Pierson
Mrs. Corrin Riley
Ms. LaTivia Rivers
Mrs. Theresa Robertson
Mr. Frank B. Schley III
Ms. Iris Tate
Mr. Jim Thomas
Mrs. Dusty Wellborn

BOARD OF TRUSTEES

Chair Mr. Frank B. Schley III
Honorary Chair Mr. F. Clason Kyle

Mrs. Janice P. Biggers
Mrs. Mary Bradley
Mr. Stephen T. Butler
Mrs. Pam Feagle
Mr. J.W. Feigner Jr
Mr. Thomas H. Flournoy
Mrs. Frank D. Foley Jr.

Mr. Frank D. Foley III
Mrs. Barbara Kennon
Mr. Joe McClure
Mrs. Elizabeth C. Ogie
Mr. Mathews D. Swift
Mr. Perrin C. Trotter
Mrs. Dusty Wellborn



Paul R. Pierce (Producing Artistic Director) has led the Springer Opera House as producing artistic director since 1988, taking the State Theatre of Georgia in new artistic directions while expanding its audience and influence throughout the nation. For over 30 years, Paul has directed and produced more than 300 comedies, dramas and musicals at the Springer. A Rome, Ga. native with a Bachelor of Fine Arts degree from the University of Georgia, he is also an Equity actor who has performed in over 1,000 American and Canadian cities with stock, regional, touring and children’s theatre companies. Paul is the author of nine plays and *The Springer Ghost Book*.

ARTISTIC STAFF

Producing Artistic Director.....Paul Pierce
Associate Artistic Director.....Keith McCoy
Director of Production..... Matthew Swindell
Associate Producer.....Katie Underwood
Company Manager Rebecca Gossett
Production Stage Manager..... Jess Adams
Musical Director..... Debbie Anderson
Properties Designer and Artisan Patti Jo Fenzel
Resident Costume Designer and Shop Manager Alex Allison
Sound Designer/Production Engineer Julianne Slaton
Technical DirectorWalter Pigford
Assistant Technical Director.....David Jones
Costume First Hand..... Mollie Lipkowitz
Production Associate..... MH Harrison
Production TechnicianScottie Scott

EDUCATION STAFF

Director of EducationDB Woolbright
PAIR Director..... Meagan Cascone
Education Coordinator Kelli Leak
Resident Teaching Artist..... Sam Bolar

ADMINISTRATIVE STAFF

Managing Director.....Danielle P. Varner
Director of Marketing and Audience Development Allie Kent
Director of Development..... Tate LeClair
Director of Finance Debra Faulk
Community Engagement Coordinator..... Machell Dooley
Box Office ManagerMax Nolan Young
Rentals Coordinator..... Kevan Baxley
Patron Services Specialist..... .David McCray
Arts Management Resident..... Elle Solomon
Landmark Operations Director.....James Clark
Guest Services..... Velvet Smiley, CJ Jackson

THE



Dr. Daniel Alcide CEO

2022 Fifteenth Avenue, Bldg. A, Columbus, GA 31901

O:1 706 256 3676 F:1 706 256 3395

www.thebtcsolutions.com

The world used to be a simpler place



As the world around us becomes more complex, you can count on our firm to be there to help.

We take a personal interest in your future because we're a neighbor in your community. Your success is our success.

Our firm is founded on
lasting values . . .

Honesty. Independence. Trust.

RG **ROBINSON, GRIMES & COMPANY, P.C.**
Certified Public Accountants & Consultants

5637 Whitesville Rd./P.O. Box 4299

Columbus, Georgia 31914

(706) 324-5435 • Fax: (706) 324-1209

E-mail: info@robinsongrimes.com

www.robinsongrimes.com

It still can be . . .

WE AT THE SPRINGER WISH TO ACKNOWLEDGE WITH GREAT RESPECT THAT THE LAND UPON WHICH WE ARE FORTUNATE TO MAKE ART IS THE ANCESTRAL HOME OF THE MUSCOGEE (CREEK) PEOPLE, WHO DOMINATED THE SOUTHEASTERN PART OF THIS CONTINENT FOR THOUSANDS OF YEARS.

AS MUSCOGEE LAND IN NORTH GEORGIA AND ALABAMA WAS GRADUALLY SEIZED AND SETTLED, THE PEOPLE FROM THE UPPER MUSCOGEE CHIEFDOM OF COOSA JOINED THEIR COUSINS IN THE LOWER MUSCOGEE CHIEFDOM OF COWETA BEFORE MOST WERE FINALLY REMOVED TO OKLAHOMA BY THE U.S. ARMY IN 1836-37.

THE SPRINGER IS ADJACENT TO “MOTHER TOWN” COWETA AND “DAUGHTER TOWN” CUSSETA, TWO ANCIENT CENTERS OF MUSCOGEE CULTURE.

FURTHER INFORMATION ABOUT THE MUSCOGEE PEOPLE CAN BE FOUND AT MUSCOGENATION.COM or LOWERMUSKOGETRIBE.COM



SHHH... IT'S TIME TO TAKE YOUR SEAT



BADLANDS' NEW
UBER-QUIET

SILENS FLEECE

Deep Pile for Warmth and Quiet

Windproof Lining for Added Protection



BadlandsGear.com

A W.C. Bradley Co. Business



Aflac®

is a proud sponsor of

The Springer Opera House

State Theatre of Georgia

