



Winter
Wonderettes

A Livestream Event!

Winter Wonderettes

Written and Created by ROGER BEAN

Vocal Arrangements by ROGER BEAN & BRIAN BAKER

Musical Arrangements by BRIAN BAKER

Winter Wonderettes premiered at Milwaukee Repertory Theater.
Joseph Hanreddy, Artistic Director and Timothy J. Shields, Managing Director.

PRESENTED BY SPECIAL ARRANGEMENT WITH
STAGE RIGHTS, LOS ANGELES, CA.

Director/Choreographer

MADDIE TWEED

Production Stage Manager

REBECCA GOSSETT

Musical Director

DEBBIE ANDERSON

Lighting Designer/Technical Director

MATTHEW SWINDELL

Props Designer

PATTI FENZEL

Costume Designer

SANDY DAWSON

Sound Designer/Audio Engineer

JULIANNE SLATON

THIS IS A LIVE STREAMING THEATRICAL EVENT.

ANY DOWNLOAD, SALE OR DISTRIBUTION OF ANY RECORDED PORTION
OF THIS EVENT IS STRICTLY PROHIBITED UNDER FEDERAL COPYRIGHT LAW.

Presented by special arrangement with Stage Rights (www.stagerights.com)

The videotaping or other video or audio recording of this production is strictly prohibited

{The Cast}



Chelcy Cutwright
Missy



Kirin Wilson
Suzy



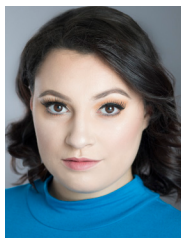
Courtlyn Holt
Cindy Lou



Christie Lamb
Betty Jean



Brooke Myers
Missy/Cindy Lou
Understudy



Alyssa Flowers
Suzy/Betty Jean
Understudy



The Author

ROGER BEAN created the long-running Off-Broadway smash hit *The Marvelous Wonderettes* (Westside Theatre), along with the sequels *Wonderettes: Caps & Gowns*, *Winter Wonderettes*, and *Wonderettes: Dream On*. Original cast albums for all *Wonderettes* shows are available from iTunes and Amazon. The *Marvelous Wonderettes* received the 2007 LA Ovation Award for Best Musical for its record-breaking Los Angeles run and continues to be an audience favorite in regional and amateur theatre companies throughout the country. Mr. Bean's doo-wop hit *Life Could Be A Dream* had a record-breaking 12-month run in Los Angeles, receiving the Los Angeles Drama Critics Circle Award, the LA Weekly Theatre Award, and the Backstage Garland Award for Outstanding Musical.

Mr. Bean wrote and created the popular jukebox musicals *Summer of Love*, *The Andrews Brothers*, *Route 66*, *Honky Tonk Laundry*, and *Why Do Fools Fall In Love?*, all currently available through Stage Rights. Additional musicals created by Mr. Bean include *Don't Touch That Dial!*, *That's Amoré*, and *Beach Blanket Bash*. Mr. Bean is currently the president of Stage Rights, the foremost independent theatrical publisher in the United States.

The Company

Chelcy Cutwright.....Missy
Courtlyn Holt.....Cindy Lou
Kirin Wilson.....Suzy
Christie Lamb.....Betty Jean

Alyssa Flowers.....Suzy/Betty Jean
Wonderstudy
Brooke Myers.....Missy/Cindy Lou
Wonderstudy



Maddie Tweed.....Director/Choreographer
Debbie Anderson.....Music Director
Rebecca Gossett.....Production Stage Manager
Matthew Swindell.....Lighting Designer
Matthew Swindell..... Technical Director
Sandy Dawson.....Costume Designer
Patti Fenzel.....Props Designer
Julianne Slaton.....Sound Designer
David Jones.....Assistant Technical Director
Josh Teal.....Master Carpenter
Elizabeth Verslues.....Costume First Hand
Ian Rossin.....Assistant Stage Manager
MH Harrison.....Spotlight Operator
C.J. Jackson.....Ritchie/Lightboard Op

❁ From the Director ❁

In 2012, the Springer Opera House transported its patrons to a blast from the past, the year of 1958 where four spunky women jammed out to the best jukebox hits of the 1950s. Through songs like “Stupid Cupid” and “All I Have To Do Is Dream,” Cindy Lou, Missy, Betty Jean and Suzy of The Marvelous Wonderettes brought love and contagious energy to the Springer stage, leaving the audience feeling nostalgic and delighted. Fast forward eight years later, and I think everyone could use a heavy dose of nostalgia and delight this unique holiday season.

Everyone in our beloved Columbus community has dealt with challenges this year. Many of the holiday traditions we look forward to each season have been postponed or changed to accommodate these wavering times. With the return of Cindy Lou, Missy, Betty Jean, and Suzy of The Winter Wonderettes, I hope each of you can take a well deserved break from the chaos to enjoy what always remains the same about the holidays: the celebration of love, family, and friendship.

I hope that whether you are returning to the Springer Opera House for the twentieth year, or visiting for the first time, you feel like you are finally home for the holidays. While we may be hiding our holiday smiles behind our masks, and not sitting shoulder to shoulder amongst our Columbus community, it is with great gratitude and joy that the Springer presents this show to its cherished patrons to celebrate this holiday season together. The cast, crew, and myself are beyond grateful to all of the dedicated individuals who have made the magic of theatre possible in a time where the future of live entertainment is uncertain.

Lastly, I would like to thank the outstanding cast and creative team for bringing merriment and holiday cheer throughout this process. All of their amazing efforts to bring this show to life have truly made this process magical. Now, settle in with your loved ones and keep a watchful eye out for that elf; it's time to ring in the holiday season!

Warmest regards and a happy holiday to you and yours,

Maddie Tweed

Musical Numbers

Act I



- Mister Santa
- Rockin' Christmas Medley
 - Rockin' Around the Christmas Tree
 - Jingle Bell Rock
 - Little Saint Nick
 - A Marshmallow World
- Chipmunk Cheer
- Snowfall
- The Man with the Bag
- It's Christman Time All Over the World
- ¿Donde Está Santa Claus?
- Mele Kalikimaka
- O Tannenbaum
- We Wanna See Santa Do the Mambo
- Santa Claus is Comin' to Town
- Christmas Will Be Just Another Lonely Day

This performance will have a fifteen minute intermission.

Act II

- Run, Rudolph, Run
- Suzy Snowflake
- This Christmas
- All Those Christmas Cliches
- Bells Medley
 - Ring Those Christmas Bells
 - Sleigh Ride
 - Jingle Bells
- What Are You Doing New Year's Eve?
- Santa Baby
- Winter Wonderland
- Bows
- Exit



CAST BIOS

Chelcy Cutwright (Missy) is excited to be back at Springer playing the role of Missy!! Springer credits include: *Singin In the Rain*, *Kudzu The Musical*, *Dreamgirls*, and *Ace: The Eugene Bullard Story*. Regional credits include: *Cinderella*, *The Marvelous Wonderettes*, *For Colored Girls*, *The Secret Garden*, *Clybourne Park*, *Mary Poppins*, and *The Three Little Pigs*. Next up Chelcy can be seen in *The Best Little Whorehouse in Texas* right here at Springer Opera House! Chelcy would like to thank God, Mom, and Grandma for all of their love and support. For updates, follow her on Instagram @chelcycut.

Courtlyn Holt (Cindy Lou) is excited and thankful to be back at the Springer for her third show. She is currently a senior at Columbus State University. Some of her favorite past credits include *Evil Dead: The Musical* (Linda), *Cinderella* (Ensemble), *Legally Blonde* (Elle Woods), *Big Fish* (Sandra Templeton) and *Guys and Dolls* (Hot Box Girl/ U.s. Sara Brown). Courtlyn would like to thank her friends, mentors, and family for always guiding her and supporting her.

Kirin Wilson (Suzy) is excited to return to the Springer stage after spending the last two years touring with various companies, including Bright Star Touring Theatre and the Nebraska Theatre Caravan. While at the Springer, she appeared in *Elf the Musical* (Jovie), *The Little Mermaid* (Adella), and *Sister Act* (Michelle), as well as being a teacher with the Springer Theatre Academy. She would like to thank Maddie, Rebecca, and Debbie for the opportunity to play on the Springer stage again, and she is excited to spend Christmas with her family.

Christie Lamb (Betty Jean) is thrilled to be here for her debut at the Springer. She is currently a junior at Columbus State University earning a BFA in Theatre Performance and a certificate in Musical Theatre. She was previously in *Legally Blonde* (Margot) in Georgia Repertory Theatre

last summer. Some of her favorite roles include *Footloose* (Ariel) and *The Addams Family* (Wednesday). Christie would like to thank her entire family, friends, teachers, and her boyfriend for always being her support system. She hopes you enjoy the show!

Alyssa Flowers (Suzy/ Betty Jean US)
Alyssa is thrilled to be back for her 3rd round at the Springer! Atlanta: *Camelot* (Atlanta Lyric Theatre) *Guys and Dolls in Concert* (Jennie T. Anderson) 9 to 5: *The Musical* (Georgia Ensemble Theatre) *Sanders Family Christmas* (Legacy Theatre) *Smoke on the Mountain* (Strand Theatre) Regional: *Evita* (Springer Opera House) *Beauty and the Beast* (Maltz Jupiter Theatre) *Gigolo: The New Cole Porter Revue* (Winter Park Playhouse) *West Side Story* (Orlando Shakespeare Theatre) *The Drowsy Chaperone* (Ozark Actor's Theatre) and *Newsies* (Orlando Repertory Theatre) National Tours: *Dreams on Ice*, *Ships: Illusionarium* (Norwegian Cruise Line). Thanks to Paul, Rebecca, Katie, Shane and the rest of the Springer crew! Visit Alyssa online at: alysaflowers08.wixsite.com/performer

Brooke Myers (Missy/Cindy Lou US) is thrilled to be back at the Springer after making her debut in *Singin' in the Rain* last spring! Brooke received her BFA in Musical Theatre with a minor in Dance from the University of Central Missouri. Some of Brooke's regional credits include: Janet Weiss in *The Rocky Horror Show* (Wagon Wheel Center for the Arts), Linda Mason in *Holiday Inn* (Circa '21), Laurey in *Oklahoma!* (Crane River Theater Company), Jovie in *Elf* (Circa '21) and Lori Beth in *Happy Days* (The Palace Theater). Brooke can also be seen on the PBS documentary, *Broadway or Bust*. Brooke would like to thank her friends and family for all the constant love and support. Mwah! (IG: brookemyers93)

PRODUCTION BIOS

Maddie Tweed (Director) is an Atlanta based actor, dancer and choreographer. She is thrilled to return to the Springer Opera House for her directing debut with *The Winter Wonderettes*. Maddie has performed on the Springer stage many times in productions that include *Of Mice and Men*, *West Side Story*, and *The Little Mermaid*, and has choreographed for the Springer Theatre Academy's productions *101 Dalmatians* and *The Rainbow Fish*. She received her Bachelor of Fine Arts in Theatre from Columbus State University in 2016, and has since moved to Atlanta to focus on choreography and teaching. Maddie would like to thank the outstanding cast and crew for being a part of this magical process, as well as her family, friends and Joey for all their love and encouragement.

Matthew Swindell (Scenic Designer/ Light Designer/Technical Director) is the Springer's Director of Production. He graduated from Columbus State University with a Bachelor of Fine Arts in Theatre Design and Technology. He has worked on many Springer productions over the past ten years in a variety of different roles including Director, Scenic Designer, Lighting Designer, Technical Director, and Road Manager for the Springer's touring company, Springer Theatricals. You may also remember Matthew from his time on stage as Teddy Roosevelt in the Springer's 2017 production of *Newsies*.

Debbie Anderson (Musical Director) has prepared choral and instrumental ensembles at the Springer since 1998 and now serves as the Springer's full-time Music Director. Her acting credits with the Springer include *Why, Baby, Why: The Music of George Jones and Tammy Wynette* (which she helped create and restage), *The King & I* (Anna Leonowens), *The Best Little Whorehouse in Texas*

(*Miss Mona*), *Phantom* (Belladova), *Honky Tonk Angels* (Angela), *Ragtime* (Mother) and *Damn Yankees* (Meg). Debbie and her brothers sang on the stage of the Grand Ole Opry in 1990.

Rebecca Gossett (Production Stage Manager) received her Bachelor of Fine Arts in Theatre Design and Technology from Columbus State University in 2014 and has been the Springer's full-time Production Stage Manager ever since. She personally stage manages most of the Springer's mainstage series as well as oversees the stage management teams for the studio and children's theatre productions, as well as oversees the Springer's internship program with Columbus State University theatre students.

Julianne Slaton (Sound Designer/Audio Engineer) earned her Bachelor of Fine Arts in Theatre Design & Technology at Columbus State University with a proficiency in Sound Design. She started at the Springer as a volunteer and transitioned to working here full time on our 2015 production of *A Chorus Line*. She has since enjoyed working as sound designer on almost every Springer production since, as well as completing her first professional scenic design for the Academy's production of *The Stinky Cheese Man and Other Fairly Stupid Tales*.

Sandy Dawson (Costume Designer) is a Columbus native and graduate of Columbus State University with a B.A. in Communications. She owned Creatively Yours, a specialty costume shop of 25 years where she costumed numerous school, church, and local theatre productions. Sandy now serves as the Springer's full-time Costume Designer. Her most recent work was seen in *Chicago* and *Cinderella*. Sandy is no stranger to the stage and has appeared in many community theatre and

Springer productions. Her first was at age 17, in *The King and I* and her favorite role, Miss Stephanie, the nosey neighbor, in *To Kill a Mockingbird*, both on the Springer stage.

Patti Jo Fenzel (Properties Designer) earned her Bachelor of Fine Arts in Theatre Design and Technology from CSU in 2010 and has worked in theaters around the country including Florida Repertory Theater, Texas Shakespeare Festival and Opera New Jersey.

Ian Rossin (Asst. Stage Manager) is currently a sophomore BA English Education and Theatre major at Columbus State University. At Columbus State, his credits include *Peter and the Starcatcher* (Light Board Op), A "Straight" Play (ASM), and *Everlasting* (ASM). Additionally, he was recently on Run Crew for the Springer's production of *Evil Dead: The Musical*. Ian hopes to grow his skills in stage management and do more with the Springer in the near future. He would like to thank Rebecca Gossett and the Springer staff for granting him this opportunity, as well as his family for supporting him. He hopes you enjoy the show!

Thank you

to our Media Sponsors



and to our Community for the generous donations during this difficult time.

Join the
**SPRINGER
SOCIETY**
Today!

The Springer Society is the driving force behind the Springer's mission. You play a vital role in protecting this beautiful National Historic Landmark and providing educational and artistic programs for the children, families, schools and citizens in our region.

WAYS TO GIVE

1 time payment - The Springer accepts gifts in the form of cash, check and credit cards.

Recurring Monthly contributions - Don't have the giving power of a major gift? We now offer recurring payments that you set on your own terms. Chose the amount and frequency with the power to cancel at any time.

As a donation match from an employer - Increase your giving power! Many companies support non-profits through a matching gift program. Simply enclose the company form with your donation.

Pledge Gifts - You may choose to pay your total gift in installments. Pledge payments may be in the form of cash, check or credit card. You may request that monthly installments be charged to your credit card until the total pledge amount is paid. Pledges should be complete within one year from your pledge date.

Securities - Contribute stock instead of cash. A gift of stock generally increases your tax savings. Check with your tax advisor to see if you qualify for tax advantages.



Paul R. Pierce (Producing Artistic Director) has led the Springer Opera House as producing artistic director since 1988, taking the State Theatre of Georgia in new artistic directions while expanding its audience and influence throughout the nation. For over 30 years, Paul has directed and produced more than 300 comedies, dramas and musicals at the Springer. A Rome, Ga. native with a Bachelor of Fine Arts degree from the University of Georgia, he is also an Equity actor who has performed in over 1,000 American and Canadian cities with stock, regional, touring and children's theatre companies. Paul is the author of nine plays and *The Springer Ghost Book*.

ARTISTIC STAFF

Producing Artistic Director.....	Paul Pierce
Director of Production.....	Matthew Swindell
Associate Producer.....	Katie Underwood
Musical Director.....	Debbie Anderson
Properties Designer and Artisan.....	Patti Jo Fenzel
Resident Costume Designer and Shop Manager.....	Sandy Dawson
Production Stage Manager.....	Rebecca Gossett
Sound Designer/Production Engineer.....	Julianne Slaton
Assistant Technical Director.....	David Jones
Master Carpenter.....	Josh Teal
Costume Technician.....	Elizabeth Verslues

EDUCATION STAFF

Director of Education.....	Sally Baker
Associate Director of Education.....	DB Woolbright
Director of Educational Outreach.....	Beth Reeves

ADMINISTRATIVE STAFF

Managing Director.....	Danielle P. Varner
Director of Marketing and Audience Development.....	Allie Kent
Director of Development.....	Tate LeClair
Director of Finance.....	Debra Faulk
Director of Community Outreach.....	Aileen Fowles
Box Office Manager.....	Kevan Baxley
Arts Management Residents.....	David McCray, Ari McLean
Landmark Operations Director.....	James Clark
Events Manager.....	Carla Goldman
Guest Services.....	Machell Dooley
Bar Staff.....	Stacey Goss, Katie Underwood, Kirin Wilson, David McCray, Patti Jo Fenzel, Jana Crawford Pam Miller, James Clark , Elizabeth Versules

**Music Clearance by Rubicon II Music Clearance, Burbank, CA.
All Songs Used By Permission. All Rights Reserved.**

A Marshmallow World by Peter DeRose and Carl Sigman. Used by permission of Shapiro, Bernstein & Co., Inc.

All Those Christmas Clichés by Lynn Ahrens and Stephen Flaherty. © 1993 MB Music Corp. (ASCAP), Pen and Perseverance (ASCAP) & Hillsdale Music Inc. (ASCAP). All rights on behalf of Pen and Perseverance & Hillsdale Music Inc. administered by WB Music Corp. (ASCAP)

Chipmunk Cheer by Roger Bean. © SSP Publishing.

Christmas Will Be Just Another Lonely Day by Lee Jackson and Patti Seymour. Used courtesy of Ahab Music Company, Inc. (BMI)

¿Dónde Está Santa Claus? by Alvin Greiner, Rod Gordon Parker and George Scheck, Ragtime Music Co.

It's Christmas Time All Over The World by Hugh Martin. TRO-© 1965 (Renewed) Cromwell Music, Inc., New York, NY

Jingle Bell Rock by Joe Beal and Jim Boothe. © 1957 (Renewed) Chappell & Co., Inc. (ASCAP)

Jingle Bells by J. Pierpont. Arrangement © 2003 SSP Publishing

Little Saint Nick by Mike E. Love, Brian Douglas Wilson. © All rights owned or administered by Irving Music, Inc. (BMI)

The Man With The Bag by Dudley Brooks, Harold Stanley & Irving Taylor. Used by permission of Morley Music Co.

Mele Kalikimaka by R. Alex Anderson. All rights owned and administered by Lovely Hula Hands Music LLC (c/o Lichelle Music Co.) (ASCAP)

Mister Santa by F. D. Ballard. Used by permission of Edwin H. Morris & Company, a division of MPL Communications, Inc.

O Tannenbaum German Traditional. Arrangement © 2003 SSP Publishing

Ring Those Christmas Bells by Marve Fisher and Gus Levene. © Music Sales Corporation (ASCAP)

Rockin' Around The Christmas Tree by Johnny Marks. © 1958 (Renewed 1986) Used courtesy of St. Nicholas Music (ASCAP)

Run, Rudolph, Run by Johnny Marks and Marvin Brodie. Used courtesy of St. Nicholas Music (ASCAP)

Santa Baby by Joan Javits, Philip Springer and Tony Springer. Used courtesy of Tamir Music (ASCAP)

Santa Claus Is Comin' To Town by J. Fred Coots and Haven Gillespie. © 1934 (Renewed) EMI Miller Music and Haven Gillespie Music c/o Larry Spier Music Publishing (ASCAP)

Sleigh Ride by Leroy Anderson and Mitchell Parish. Used by permission of EMI Mills Music, Inc. (ASCAP)

Snowfall by Claude Thornhill and Ruth Thornhill. © 1941 (Renewed) Chappell & Co. (ASCAP)

Suzy Snowflake by Roy C. Bennett and Sid Tepper. © 1951 (Renewed) Chappell & Co., Inc. (ASCAP)

This Christmas (Hang All The Mistletoe) by Donny Hathaway and Nadine McKinnor. Used courtesy of BMG Songs, Inc. and Crystal Raisin Music (ASCAP). All rights in the U.S. on behalf of Kuumba Music Publishing (ASCAP) administered by BMG Songs, Inc. (ASCAP)

(We Wanna See) Santa Do The Mambo by Fred Smith and Horace Webb. Used through the courtesy of Regent Music Corp. (BMI)

What Are You Doing New Year's Eve? by Frank Loesser. Used by permission of Frank Music Corp.

Winter Wonderland by Bernard Felix and Dick Smith. © 1934 (Renewed) WB Music Corp. (ASCAP)